



basic education

Department:
Basic Education
REPUBLIC OF SOUTH AFRICA

SENIOR CERTIFICATE EXAMINATIONS/ NATIONAL SENIOR CERTIFICATE EXAMINATIONS

ENGLISH HOME LANGUAGE P3

MAY/JUNE 2025

MARKS: 100

TIME: 3 hours

This question paper consists of 7 pages.

INSTRUCTIONS AND INFORMATION

1. This question paper consists of TWO sections:

SECTION A: Essay (50)
SECTION B: Transactional Texts (2 x 25) (50)
2. Answer ONE question from SECTION A and TWO questions from SECTION B.
3. Write in the language in which you are being assessed.
4. Start EACH section on a NEW page.
5. You must plan (e.g. using a mind map/a diagram/a flow chart/key words), edit and proofread your work. The plan must appear BEFORE the answer.
6. All planning must be clearly indicated as such. It is advisable to draw a line through all planning.
7. You are strongly advised to spend your time as follows:

SECTION A: approximately 100 minutes
SECTION B: approximately 80 (2 x 40) minutes
8. Number the answers correctly according to the numbering system used in this question paper.
9. The title/heading must NOT be included when doing a word count.
10. Write neatly and legibly. ...

SECTION A: ESSAY**QUESTION 1**

Write an essay of 400–450 words (2–2½ pages) on ONE of the following topics. Write down the NUMBER and TITLE/HEADING of your essay.

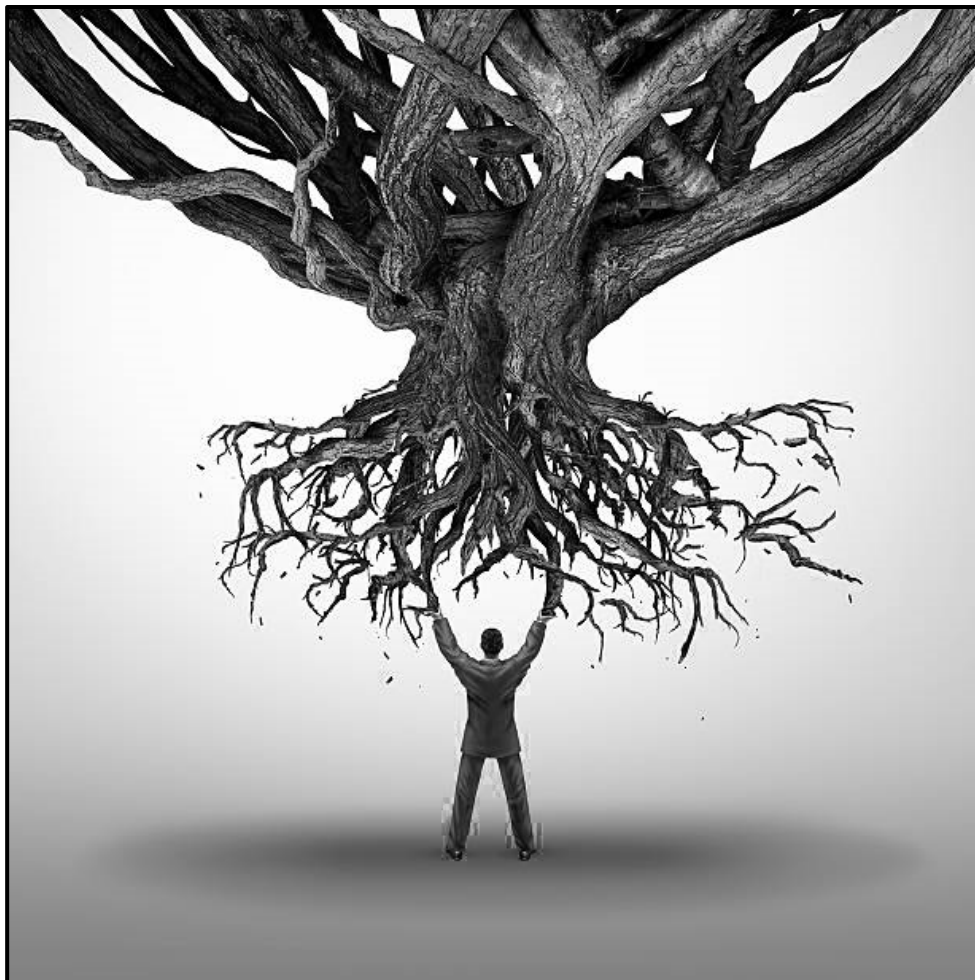
- | | | |
|-----|--|-------------------|
| 1.1 | A sentimental journey | [50] |
| 1.2 | 'My face turned pale as deadly pale;
My legs refused to walk away;
My life and all seemed turned to clay.' | – John Clare [50] |
| 1.3 | An equal society is an impossible dream. | [50] |
| 1.4 | Sounds from within these walls | [50] |
| 1.5 | 'Difficult roads often lead to beautiful destinations.' | – Zig Ziglar [50] |

The pictures reproduced on pages 4 and 5 may evoke a reaction or feeling in you or stir your imagination.

Select ONE picture and write an essay in response. Write the question number (1.6, 1.7 OR 1.8) of your choice and give your essay a title.

NOTE: There must be a clear link between your essay and the picture you have chosen.

1.6



[Source: [pinterest.com](https://www.pinterest.com)]

[50]

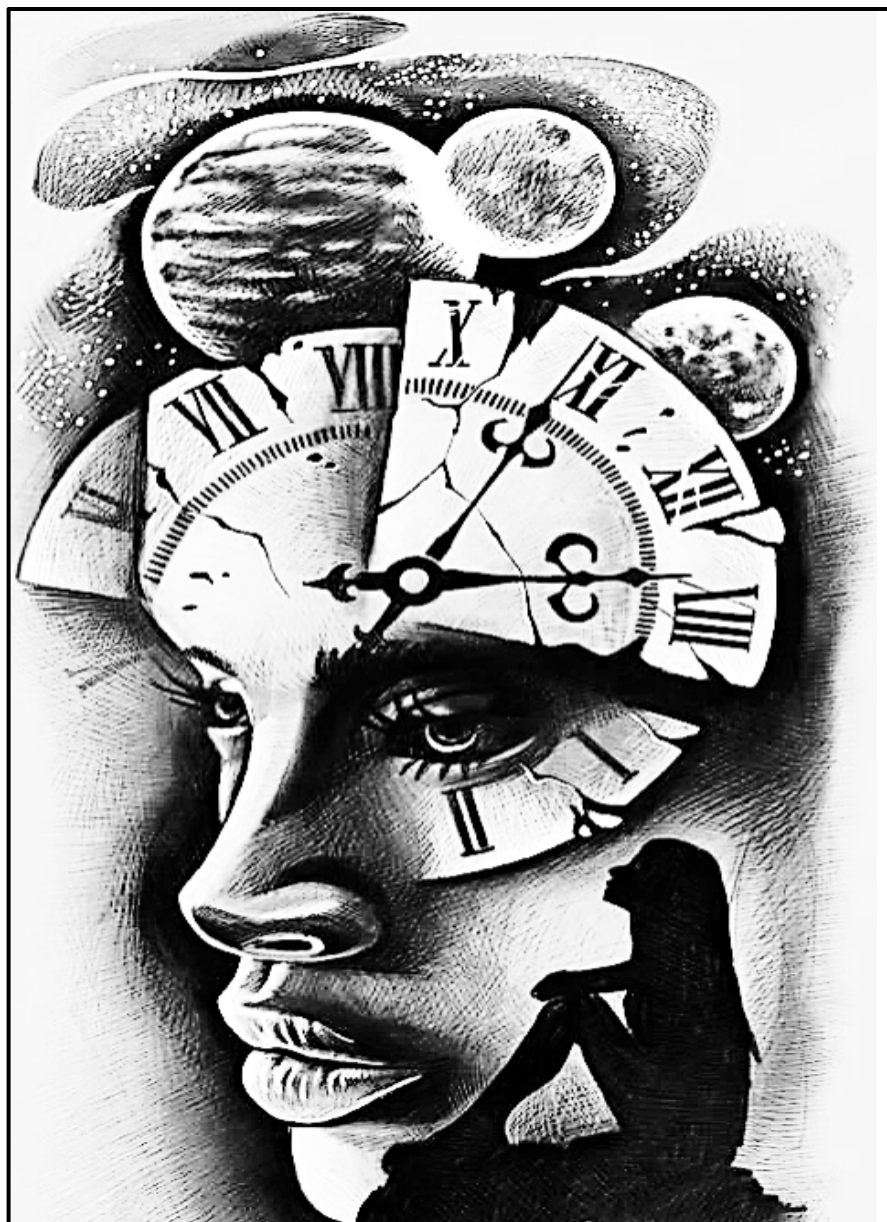
1.7



[Source: [pinterest.com](https://www.pinterest.com)]

[50]

1.8



[Source: [pinterest.com](https://www.pinterest.com)]

[50]

TOTAL SECTION A: 50

SECTION B: TRANSACTIONAL TEXTS**QUESTION 2**

- Respond to TWO of the following topics.
- The body of each of your answers should be 180–200 words (20–25 lines) in length.
- Pay careful attention to the following:
 - Audience, register, tone and style
 - Choice of words and language structure
 - Format
- Write down the NUMBER and the TITLE/HEADING of the text you have chosen, e.g. 2.1 LETTER TO THE PRESS.

2.1 LETTER TO THE PRESS

Parents have been criticised for their lack of monitoring their children's online activities.

Write a letter to a local newspaper expressing your views.

[25]**2.2 FORMAL SPEECH**

As a social worker in your community, you have noticed an alarming increase of societal pressures experienced by the youth.

You have been invited by your community to address the parents on the topic: 'Teens in Need'.

Write the speech that you will present.

[25]**2.3 E-MAIL**

Your team at work has requested that you, as their leader, approach the Human Resources Department about the establishment of 'relaxation zones' in the workspace.

Write the e-mail that you will send to the Human Resources Manager.

[25]**2.4 FORMAL REPORT**

Your area's Social Committee President has identified a lack of facilities for young people as an issue that has to be addressed. She/He has tasked you, as the Chairperson of the Social Committee, to investigate the viability of creating more amenities for the youth in the area.

Write the report that you will submit.

[25]

2.5 DIALOGUE

[Source: mdpoison.com]

The two characters above are having a serious conversation.

Write the dialogue that takes place.

[25]

2.6 OBITUARY

A world-renowned politician has died under suspicious circumstances.

Write her/his obituary.

[25]

TOTAL SECTION B:	50
GRAND TOTAL:	100